

Issue 3 – July 2009

In this issue you can find out about:

- How Readers are currently affected by the Collection Moves
- Why the Collection Moves are important for the preservation of the collections
- The embargo period and why this is necessary for the success of the project

In January this year we started a Collection Moves programme of low to nil use items to a new storage facility at our Boston Spa site, in West Yorkshire. It is the largest programme of moves we have undertaken since the opening of St Pancras in 1998 and it is intended to secure the condition of these items for the long-term.

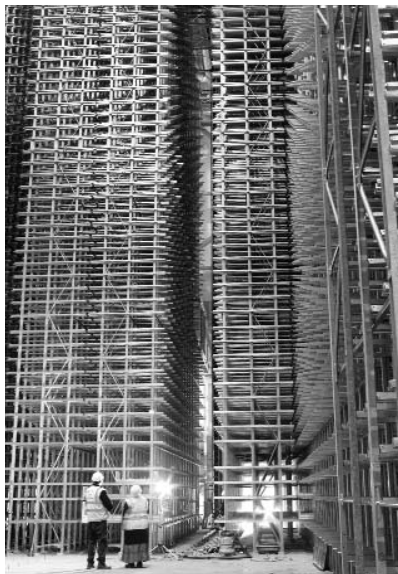
The moves are being undertaken in phases and the first phase is currently being prepared. Collection items involved in Phase One are being placed under embargo as they enter the programme to enable collections to be prepared and data collected, and this embargo period is currently expected to last into early 2010.

How are Readers affected at present?

In line with Phase One of the programme the following shelf marks are currently embargoed:

P.101/1 > P.2000/1482
PP.2 > PP.2000

The embargo will extend to the following shelf marks on Monday 17 August 2009.



(A)OA34-E910 → (A)WZ999-X(999)
(GP)AA32(A1)-E(1) → (GP)BX53(F6)-F(6)
(KB)BY373 → (KB)RD230
(OB)AA00 → (OB)WZ999
(OP)AA00-E(1) → (OP)WZ999-X(999)
(P)AA00-E(1) → (P)WZ999-X(999)
PP.7612 → PP.8000
(XB)AA00 → (XB)WZ999
(XP)AA00-E(1) → (XP)WZ999-X(999)
Reserve (B)AA00 → Reserve (B) WZ999
H.67/1 → H.99/9999
H.2000 → H.2009
J/YC.1986 → J/YC.2000
J/YH.1986 → J/YH.2000
J/YL.1986 → J/YL.2000
J/YV.1986 → J/YV.2000
Nov.1. → Nov.55714
U.1 → U.a
W.P.1 → W.P.17199
W.P.A → W.P.D.999/99

Also included is hard copy patents material from the following countries: **Australia; Austria; Belgium; Brazil; Bulgaria; Canada; China; Czech Republic; Denmark; Finland; Germany; Hungary; Irish Republic; Italy; Japan; Netherlands; New Zealand; Norway; African Intellectual Property Organisation (O.A.P.I.); Poland; Romania; Russia; Spain; Sweden; Switzerland; United States of America.**

Some high use shelf marks have been retained at St Pancras and you can check whether a shelf mark is affected by the Collection Moves programme through the request page on the Integrated Catalogue <http://catalogue.bl.uk>

What's happening at the Additional Storage Building?

The Additional Storage Building is a complex and unique building in terms of its space and systems. Construction is now complete but in order to begin using the building as a storage facility for British Library collections, multiple activities must be undertaken. These include the loading of empty storage containers into the building, unloading the relocated collection items and loading them into these containers, attaching shelf marks and fine tuning systems as they move in to full operation.

Why is the embargo necessary?

During the start up period up to 800 containers each day, Monday to Friday, will be loaded into the building. Loading them into the storage system will occupy an eight-hour shift during which time no other activity can take place. Because of the manufacturing process, the containers must be placed into the storage system within 48 hours of their production, so the logistics of manufacture, delivery and load are tightly geared with little room for recovery in the event of issues such as transport disruption. Over the same period we will be relocating and loading collection items into the building at a rate of 300 metres each day. The loading of collection items into the building will occupy a second eight-hour shift, Monday to Saturday. Both load processes will involve the marshalling of significant quantities of material into and through the building to very tight timescales.

Bob Aspey, the Additional Storage Building manager, comments: "Offering retrieval and delivery services from the stock held in the Additional Storage Building at the same time as we are loading storage containers and collections would require us to use a third shift and to move to 24 hour working. Since we will already be working six days a week, we would also need to move to seven day working. This would eat into time for routine system maintenance and would introduce further risk into what is already a tightly-gearred process. It would also introduce a counter-flow of material through and out of the building. For all of these reasons, we have reluctantly taken the decision to suspend access to material once it has entered the new building until we have completed the load of empty storage containers and it is ready for purpose."

How long will items be under embargo?

Due to the complexity of the operations described above, the start up phase is expected to last into early 2010. The Library will be updating you on this at regular intervals.

What happens after the embargo?

The system for ordering items will remain unchanged. A quality assurance programme is already in place to ensure that records match and items going into the storage system can be quickly and accurately retrieved from the new facility. Following this period, material will be delivered to our Reading Rooms in St Pancras from the Additional Storage Building within 48 hours as is presently done.

Why is it necessary to move the collections?

■ **To improve collection storage conditions:**

As guardians of the national collection, the Library must secure the future of all items. The Collection Moves will enable us to move collections currently at Colindale, Woolwich and Micawber Street in poor archival conditions, into a modern, fit for purpose environmentally controlled facility, dramatically improving their long-term preservation.

■ **Provide space for the future growth of the collections:**

The Collection Moves will help us to rationalise the storage of our material creating space for growth and in the long-term greatly improving our services to Readers by offering access via just two sites.

■ **Vacate storage buildings as leases expire:**

The leases on our buildings at Woolwich, Micawber Street and 120 Colindale Avenue are due to expire in 2010 which means that all collections at these locations will need to be moved prior to this. We have little or no opportunity to extend the leases on these buildings.

What's happening to the newspaper collections?

In Phase Two of the Collection Moves programme, high use and high value non-newspapers (serials and periodicals) held at 130 Colindale, will move to St Pancras and will be available for access by Readers in the St Pancras Reading Rooms. Low use non-newspapers will move directly to the new storage facility at Boston Spa.

The microfilm collection will also be transferred to St Pancras and will be available for Readers to access.

Hardcopy newspapers currently held at the main Colindale building will be moved to Boston Spa. The newspaper collection items moving from 120 Colindale (the legal deposit collection) will begin in 2010 and materials will be transferred on a staggered basis.

In June we held the first two sessions of what is planned to be a regular programme of Reader workshops at Colindale and plan to issue a bulletin focusing more specifically on newspapers over the next quarter.

We will keep you regularly updated on this Collection Moves programme. You can also visit www.bl.uk/collectionmoves

For any queries about Collection Moves, please contact Customer Services on +44 (0)1937 546 060 or email customer-services@bl.uk
